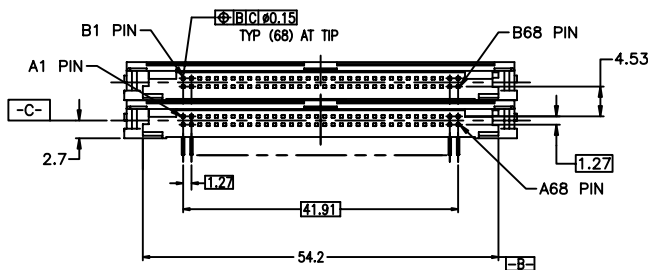
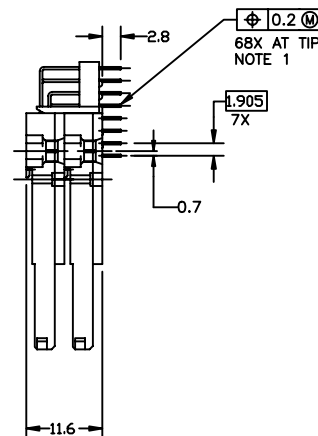
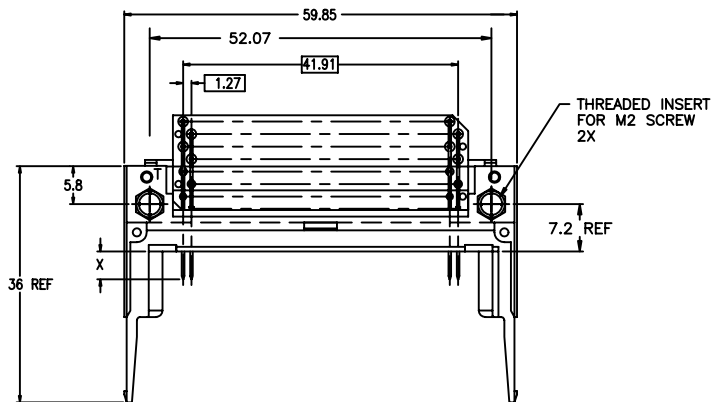


Tous droits strictement reserves. Reproduction ou communication a des tiers interdite sous quelque forme que ce soit sans autorisation ecrite du proprietaire. Propriete de c FCI. Droits de reproduction FCI.

All rights strictly reserved. Reproduction or issue to third parties in any form whatever is not permitted without written authority from the proprietor. Property of FCI. Copyright FCI.



PRODUCT NO.	DIM X			MOUNTING STYLE	COLOR
	4.25±0.1	3.5±0.1	5.0±0.1		
92821-000/000LF	OTHERS	36,67	1,17,34 35,51,68	TOP W/O LOCATOR	BLACK



NOTES:

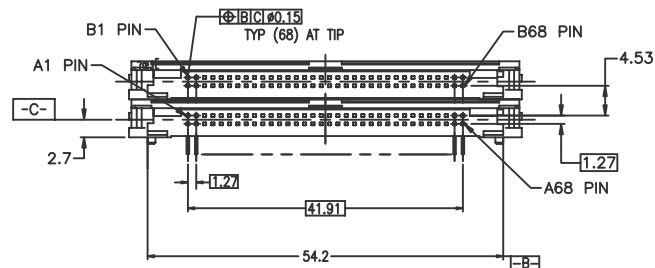
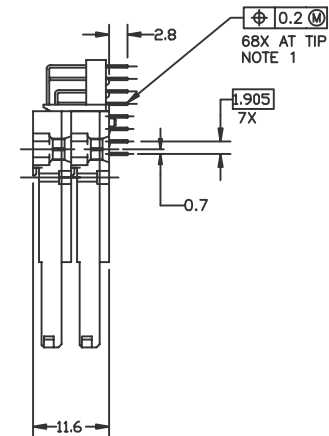
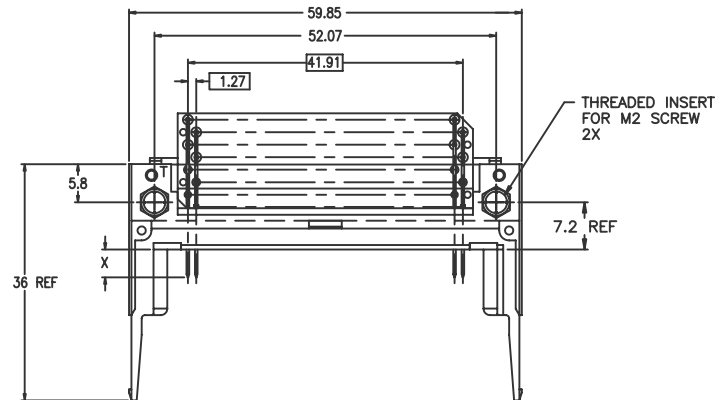
- TRUE POSITION IS A FREE GRID TO THE PIN PATTERN ITSELF. SEE TA-946 FOR PCB LAYOUT.
- MATERIAL: PLASTIC: LCP UL94V-0  
PIN: PHOSPHOR BRONZE
- FINISH (PIN):  
UNDER PLATING: 0.5 μM MIN. Ni  
CONTACT AREA: 0.1 μM MIN GOLD OVER 0.5 μM MIN. Pd-Ni  
SOLDER AREA(TIN LEAD OPTION): 2.5 μM MIN. Sn-Pb  
SOLDER AREA(LEAD FREE OPTION): 2.5 μM MIN. PURE TIN.

mat'l. code				tolerances unless otherwise specified				CUSTOMER COPY		Electronics www.fciconnect.com	
ltr	ecn no	dr	date	linear	.X±.3			projection	title		
D	V31680	RDS	9/8/93		.XX±.13				68 POSITION DOUBLE DECK		
E	V40623	RDS	3/16/94	angles	.XXX±.051				TYPE-123 EJECT HEADER		
F	V41226	RDS	8/18/94		0° ±2'				product family MCS code -		
G	V41439	RDS	9/30/94	dr	D.SHEAFFER	6/9/93	MM	size		sheet	
H	T40309	MSC	2/2/95	enr	D.BRANN	6/9/993		dwg no			1 of 6
J	V12164	TFG	8/17/01	chr	D.BRANN	6/9/93	scale	A4		92821	
K	N05-0052	WB	02/25/05	appd	D.BRANN	6/9/93		2:1			cage code
sheet	revision	K	K	K	K	K			26	4	
index	sheet	1	2	3	4	5	6				

Tous droits strictement reserves. Reproduction ou communication a des tiers interdite sous quelque forme que ce soit sans autorisation ecrite du proprietaire. Propriete de c FCI. Droits de reproduction FCI.

All rights strictly reserved. Reproduction or issue to third parties in any form whatever is not permitted without written authority from the proprietor. Property of FCI. Copyright FCI.

PRODUCT NO.	DIM X			MOUNTING STYLE	COLOR
	4.25±0.1	3.5±0.1	5.0±0.1		
92821-003/003LF	OTHERS	36,67	1,17,34 35,51,68	TOP W\LOCATOR	BLACK



NOTES:

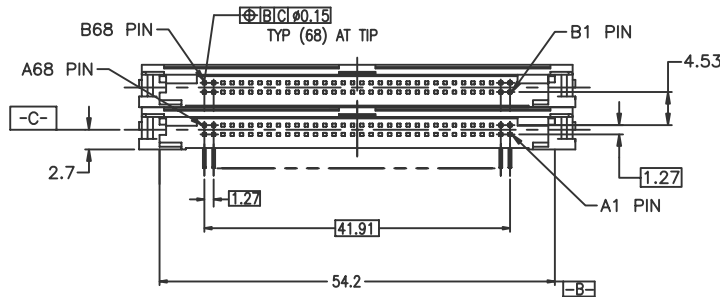
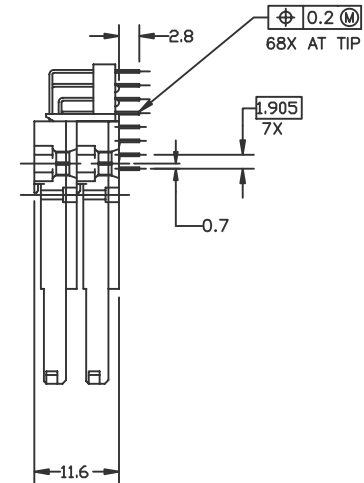
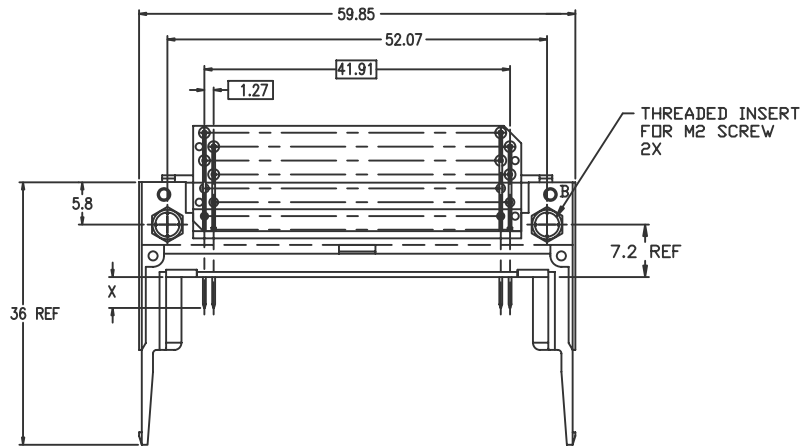
- TRUE POSITION IS A FREE GRID TO THE PIN PATTERN ITSELF.
- SEE TA-946 FOR PCB LAYOUT.
- MATERIAL:  
PLASTIC: LCP UL94V-0  
PIN: PHOSPHOR BRONZE
- FINISH (PIN):  
UNDER PLATING: 0.5 μM MIN. Ni  
CONTACT AREA: 0.1 μM MIN GOLD OVER 0.5 μM MIN. Pd-Ni  
SOLDER AREA(TIN LEAD OPTION): 2.5 μM MIN. Sn-Pb  
SOLDER AREA(LEAD FREE OPTION): 2.5 μM MIN. PURE TIN

mat'l. code				tolerances unless otherwise specified			CUSTOMER COPY		 Electronics www.fciconnect.com		
ltr	ecn no	dr	date	linear	.X±.3		projection	title			
K					.XX±.13				68 POSITION DOUBLE DECK		
					.XXX±.051				TYPE-123 EJECT HEADER		
				angles	0° ±2'		 MM scale 2:1	product family MCS		code	
				dr	D.SHEAFFER	6/9/93		size dwg no		-	
				enr	D.BRANN	6/9/93		A4		sheet	
				chr	D.BRANN	6/9/93		92821		2 of	
				appd	D.BRANN	6/9/93					
sheet index	revision sheet										

Tous droits strictement reserves. Reproduction ou communication a des tiers interdite sous quelque forme que ce soit sans autorisation ecrite du Proprietaire. Propriete de c FCI. Droits de reproduction FCI.

All rights strictly reserved. Reproduction or issue to third parties in any form whatever is not permitted without written authority from the Proprietor. Property of FCI. Copyright FCI.

PRODUCT NO.	DIM X			MOUNTING STYLE	COLOR
	4.25±0.1	3.5±0.1	5.0±0.1		
92821-500/500LF	OTHERS	36,67	1,17,34 35,51,68	BOTTOM W/O LOCATOR	NATURAL



NOTES:

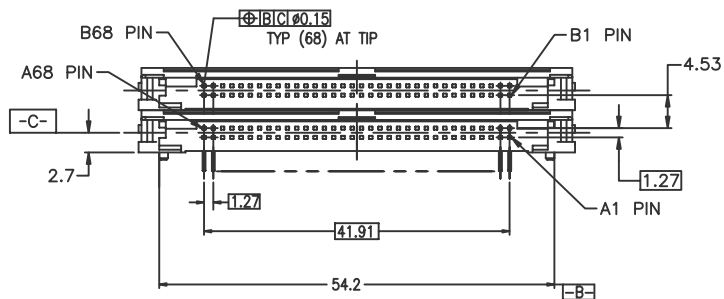
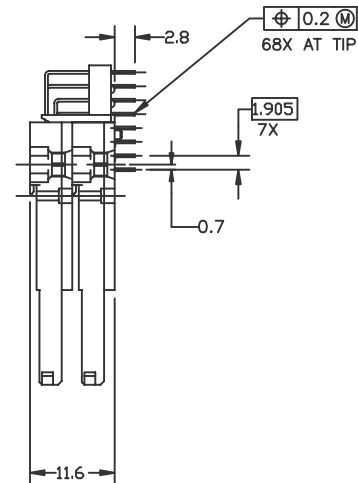
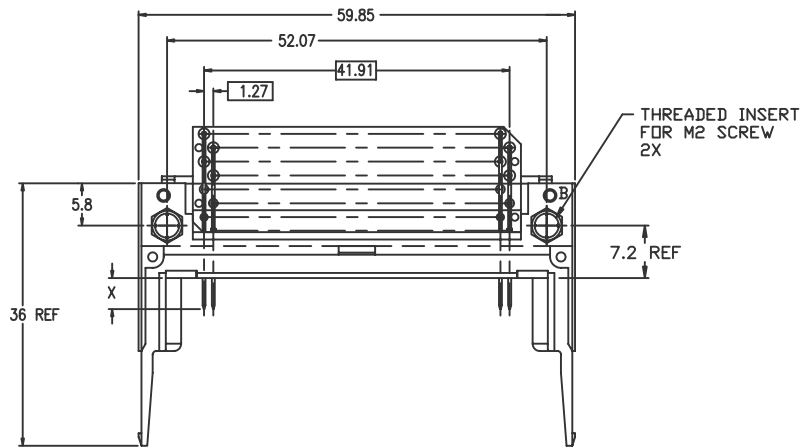
- TRUE POSITION IS A FREE GRID TO THE PIN PATTERN ITSELF.
- SEE TA-946 FOR PCB LAYOUT.
- MATERIAL:  
PLASTIC: LCP UL94V-0  
PIN: PHOSPHOR BRONZE
- FINISH (PIN):  
UNDER PLATING: 0.5 μM MIN. NI  
CONTACT AREA: 0.1 μM MIN GOLD OVER 0.5 μM MIN. Pd-NI  
SOLDER AREA(TIN LEAD OPTION): 2.5 μM MIN. Sn-Pb  
SOLDER AREA(LEAD FREE OPTION): 2.5 μM MIN. PURE TIN

mat'l. code		tolerances unless otherwise specified		CUSTOMER COPY	FCI Electronics www.fciconnect.com			
ltr	ecn no	dr	date	linear	projection	title 68 POSITION DOUBLE DECK TYPE-123 EJECT HEADER		
K							.X±.3	product family MCS code -
							.XX±.13	
				.XXX±.051	sheet 3 of			
				angles	0° ±2'			
		dr	D.SHEAFFER 6/9/93		scale 2:1	A4		
		enr	D. BRANN 6/9/93					
		chr	D.BRANN 6/9/93					
		appd	D.BRANN 6/9/93					
sheet index	revision sheet							

Tous droits strictement reserves. Reproduction ou communication a des tiers interdite sous quelque forme que ce soit sans autorisation ecrite du proprietaire. Propriete de c FCI. Droits de reproduction FCI.

All rights strictly reserved. Reproduction or issue to third parties in any form whatever is not permitted without written authority from the proprietor. Property of FCI. Copyright FCI.

PRODUCT NO.	DIM X			MOUNTING STYLE	COLOR
	4.25±0.1	3.5±0.1	5.0±0.1		
92821-503/503LF	OTHERS	36,67	1,17,34 35,51,68	BOTTOM W\LOCATOR	NATURAL



NOTES:

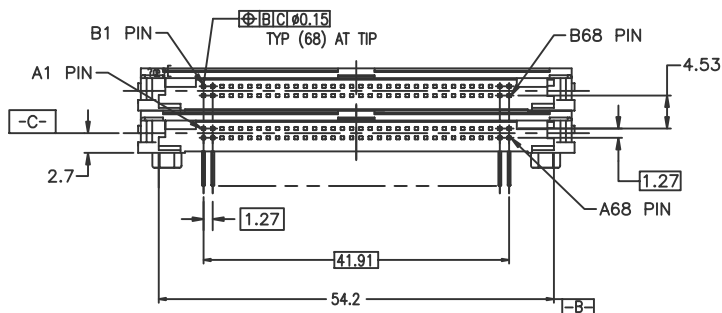
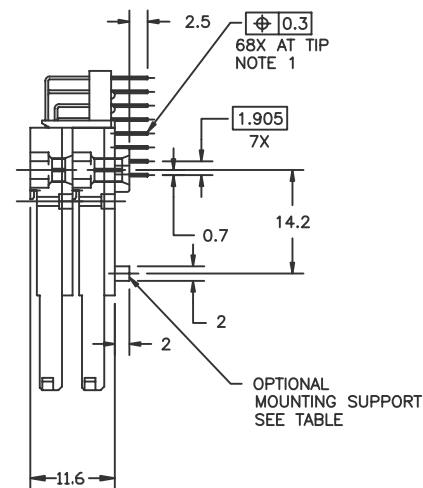
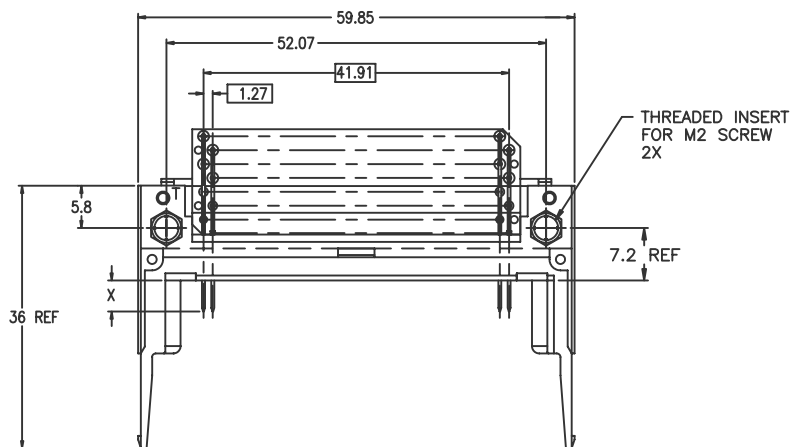
- TRUE POSITION IS A FREE GRID TO THE PIN PATTERN ITSELF.
- SEE TA-946 FOR PCB LAYOUT.
- MATERIAL:  
PLASTIC: LCP UL94V-0  
PIN: PHOSPHOR BRONZE
- FINISH (PIN):  
UNDER PLATING: 0.5 μM MIN. NI  
CONTACT AREA: 0.1 μM MIN GOLD OVER 0.5 μM MIN. Pd-NI  
SOLDER AREA(TIN LEAD OPTION): 2.5 μM MIN. Sn-Pb  
SOLDER AREA(LEAD FREE OPTION): 2.5 μM MIN. PURE TIN

mat'l. code				tolerances unless otherwise specified		CUSTOMER COPY	FCI Electronics	
ltr	ecn no	dr	date	linear	angles		projection	www.fciconnect.com
K				.X±.3	0° ±2'		title	
				.XX±.13			68 POSITION DOUBLE DECK	
				.XXX±.051			TYPE-123 EJECT HEADER	
							product family MCS	
				dr D.SHEAFFER 6/9/93			code	
				enr D.BRANN 6/9/93			-	
				chr D.BRANN 6/9/93			size dwg no	
				appd D.BRANN 6/9/93			-	
sheet index	revision sheet					scale	A4	92821
						2:1		sheet 4 of

Tous droits strictement reserves. Reproduction ou communication a des tiers interdite sous quelque forme que ce soit sans autorisation ecrite du proprietaire. Propriete de c FCI. Droits de reproduction FCI.

All rights strictly reserved. Reproduction or issue to third parties in any form whatever is not permitted without written authority from the proprietor. Property of FCI. Copyright FCI.

PRODUCT NO.	DIM X			MOUNTING STYLE	COLOR	MOUNTING STYLE
	4.25±0.1	3.5±0.1	5.0±0.1			
92821-040/040LF	OTHERS	36,67	1,17,34 35,51,68	TOP W\O LOCATOR	BLACK	WITH
92821-080/080LF	OTHERS	36,67	1,17,34 35,51,68	TOP W\O LOCATOR	BLACK	WITHOUT



NOTES:

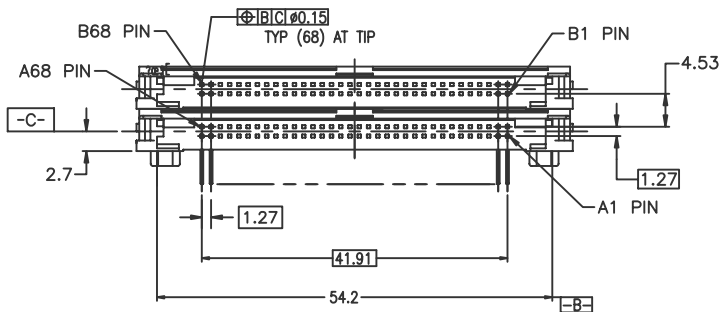
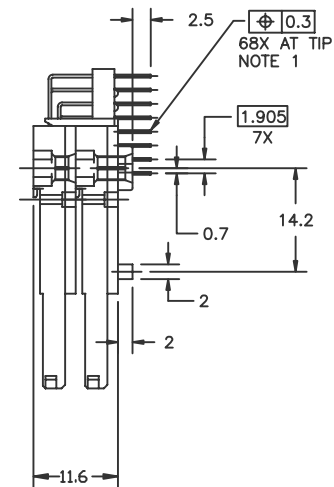
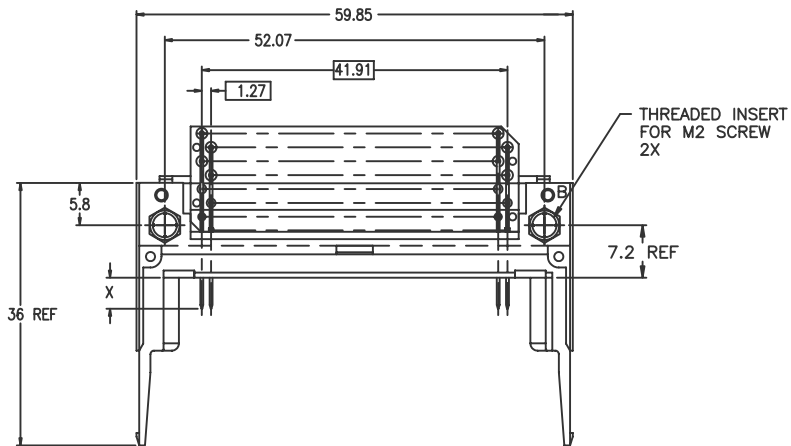
- TRUE POSITION IS A FREE GRID TO THE PIN PATTERN ITSELF.
- SEE TA-946 FOR PCB LAYOUT.
- MATERIAL:  
PLASTIC: LCP UL94V-0  
PIN: PHOSPHOR BRONZE
- FINISH (PIN):  
UNDER PLATING: 0.5 μM MIN. Ni  
CONTACT AREA: 0.1 μM MIN GOLD OVER 0.5 μM MIN. Pd-Ni  
SOLDER AREA(TIN LEAD OPTION): 2.5 μM MIN. Sn-Pb  
SOLDER AREA(LEAD FREE OPTION): 2.5 μM MIN. PURE TIN

mat'l. code				tolerances unless otherwise specified		CUSTOMER COPY	 Electronics www.fciconnect.com			
ltr	ecn no	dr	date	linear	.X±.3	projection	title			
K					.XX±.13			68 POSITION DOUBLE DECK		
					.XXX±.051			TYPE-123 EJECT HEADER		
				angles	0° ±2'	 MM scale 2:1	product family	MCS	code	
				dr	D.SHEAFFER 6/9/93		A4	size	dwg no	sheet
				enr	D.BRANN 6/9/93			92821		5 of
				chr	D.BRANN 6/9/93					
				appd	D.BRANN 6/9/93					
sheet index	revision sheet						cage code			

Tous droits strictement reserves. Reproduction ou communication a des tiers interdite sous quelque forme que ce soit sans autorisation ecrite du proprietaire. Propriete de c FCI. Droits de reproduction FCI.

All rights strictly reserved. Reproduction or issue to third parties in any form whatever is not permitted without written authority from the proprietor. Property of FCI. Copyright FCI.

PRODUCT NO.	DIM X			MOUNTING STYLE	COLOR
	4.25±0.1	3.5±0.1	5.0±0.1		
92821-540/540LF	OTHERS	36,67	1,17,34 35,51,68	BOTTOM W\O LOCATOR	NATURAL



NOTES:

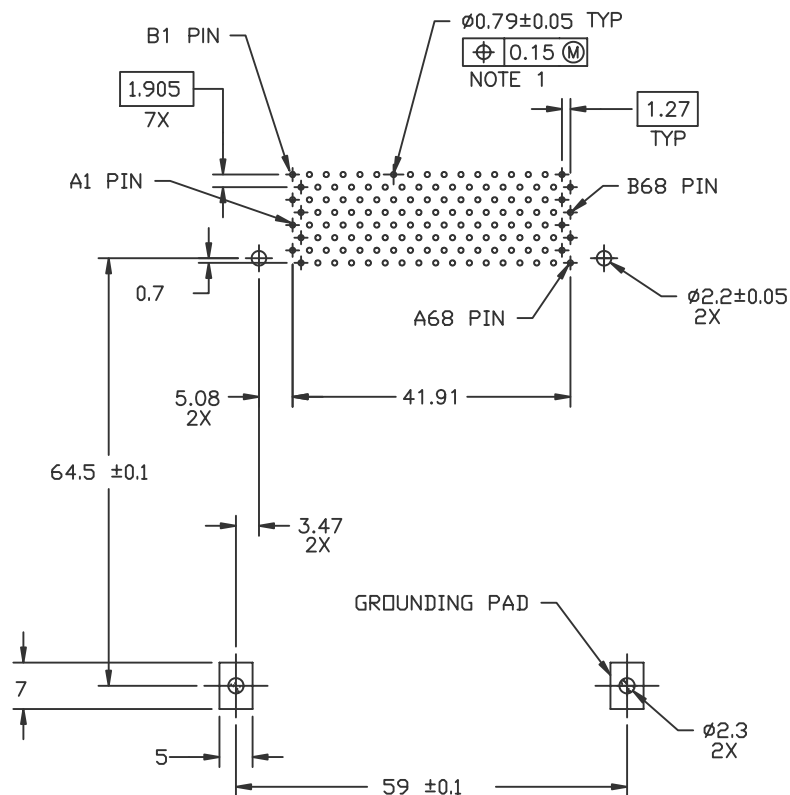
- TRUE POSITION IS A FREE GRID TO THE PIN PATTERN ITSELF.
- SEE TA-946 FOR PCB LAYOUT.
- MATERIAL:  
PLASTIC: LCP UL94V-0  
PIN: PHOSPHOR BRONZE
- FINISH (PIN):  
UNDER PLATING: 0.5 uM MIN. Ni  
CONTACT AREA: 0.1 uM MIN GOLD OVER 0.5 uM MIN. Pd-Ni  
SOLDER AREA(TIN LEAD OPTION): 2.5 uM MIN. Sn-Pb  
SOLDER AREA(LEAD FREE OPTION): 2.5 uM MIN. PURE TIN

mat'l. code				tolerances unless otherwise specified		CUSTOMER COPY	 Electronics www.fciconnect.com		
ltr	ecn no	dr	date	linear	.X±.3		projection	title	
K					.XX±.13			68 POSITION DOUBLE DECK	
					.XXX±.051			TYPE-123 EJECT HEADER	
				angles	0° ±2'	 MM scale 2:1	product family MCS		
				dr	D.SHEAFFER 6/9/93		size		
				enr	D.BRANN 6/9/93		dwg no		
				chr	D.BRANN 6/9/93		A4 92821		
				appd	D.BRANN 6/9/93		sheet 6 of		
sheet index	revision sheet							cage code	

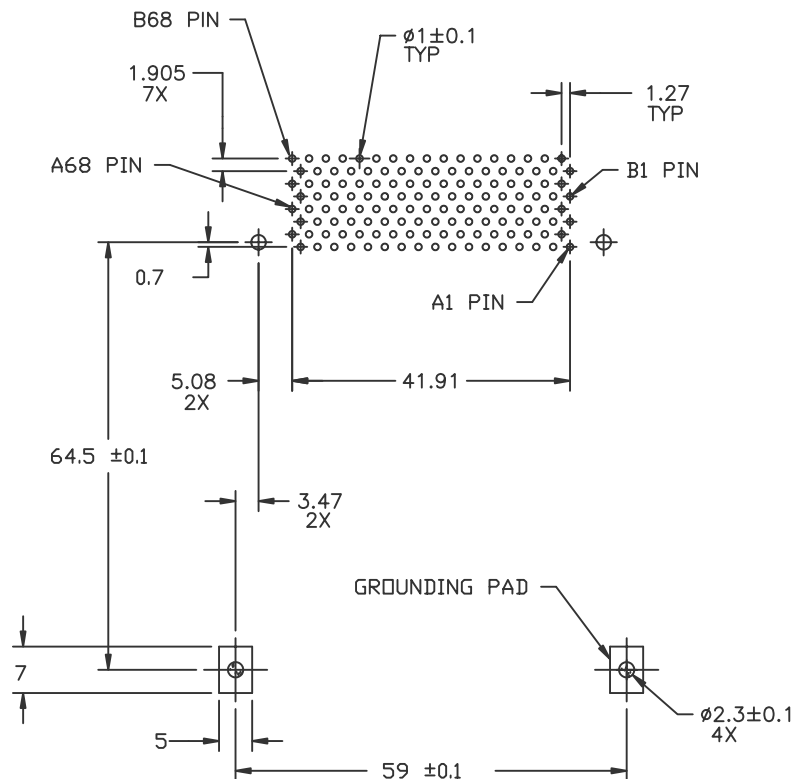
Tous droits strictement reserves. Reproduction ou communication a des tiers interdite sous quelque forme que ce soit sans autorisation ecrite du Proprietaire. Propriete de c FCI. Droits de reproduction FCI.

All rights strictly reserved. Reproduction or issue to third parties in any form whatever is not permitted without written authority from the Proprietor. Property of FCI. Copyright FCI.

SEE SH. 1&2



RECOMMENDED P.C.B. LAYOUT FOR TOP MOUNTED SCALE 2/1



RECOMMENDED P.C.B. LAYOUT FOR BOTTOM MOUNTED SCALE 2/1

mat'l. code				tolerances unless otherwise specified			CUSTOMER COPY		 FCI Electronics <a href="http://www.fciconnect.com">www.fciconnect.com</a>	
ltr	ecn no	dr	date	linear	.X±.3		projection	title		
K					.XX±.13			68 POSITION DOUBLE DECK		
					.XXX±.051			TYPE-123 EJECT HEADER		
				angles	0° ±2'		 MM	product family		code
				dr	D.SHEAFFER	6/9/93		MCS		-
				enr	D.BRANN	6/9/93		size dwg no		-
				chr	D.BRANN	6/9/93		A4		sheet
				appd	D.BRANN	6/9/93		92821		7 of
sheet index	revision sheet						scale	2:1	cage code	